

**TIGER SERIES**

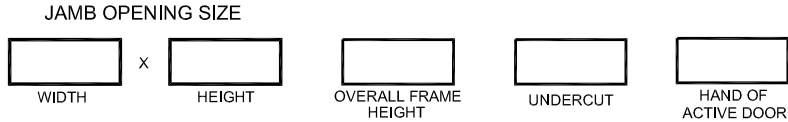
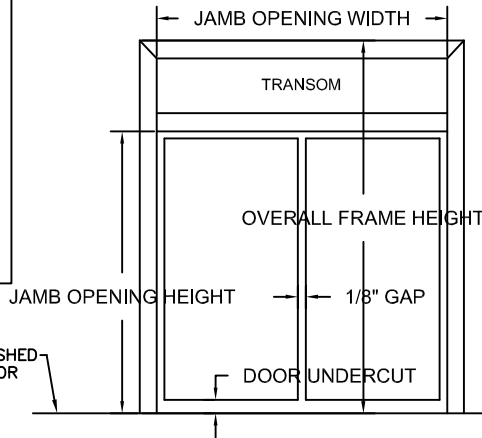
- COMMERCIAL DUTY
- HEAVY DUTY

**INTERMEDIATE HEADER**

- FIXED
- REMOVABLE  
(SEE REMOVABLE HEAD DETAILS)

**TRANSOM**

- GLASS (BY OTHERS)
- FRP PANEL
- V BLADE LOUVER
- FLAT BLADE LOUVER



ROUGH OPENING:  
OVERALL FRAME PLUS 1/4" ALL  
AROUND TO ALLOW FOR FRAME SHIMS.

TIGER DOOR STANDARD HARDWARE LOCATIONS WILL BE  
PROVIDED UNLESS CUSTOMER SPECIFIES OTHERWISE.

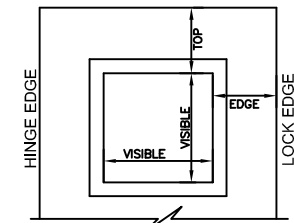
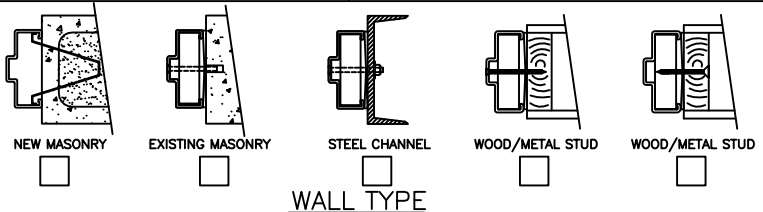
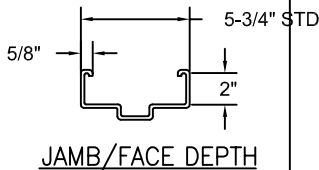
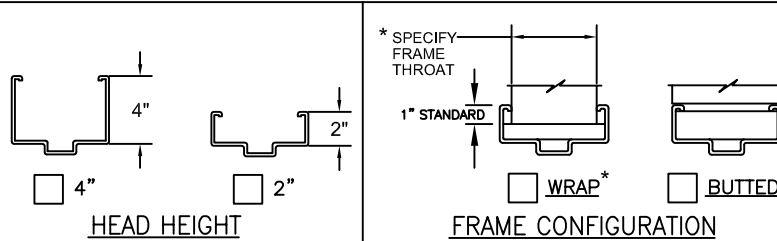
**HARDWARE PREPARATIONS**

- 4-1/2" MORTISE HINGES  
 3  4  5
- 5" MORTISE HINGES  
 3  4  5
- CONTINUOUS HINGE \*
- CYLINDRICAL 161 LOCK
- CYLINDRICAL DEADBOLT
- MORTISE DEADLOCK \*
- MORTISE 86 LOCK
- MORTISE EXIT DEVICE
- RIM EXIT DEVICE
- SVR EXIT DEVICE
- CVR EXIT DEVICE \*
- CLOSER
- PUSH/PULL PLATES
- SURFACE OH HOLDER/STOP
- CONCEALED OH HOLDER/STOP \*
- SURFACE DOOR BOTTOM
- CONCEALED DOOR BOTTOM \*
- MANUAL FLUSH BOLTS
- AUTOMATIC FLUSH BOLTS \*  
(wood type for UL rated)
- FRP ASTRAGAL  
Installed on INA leaf STD
- OTHER\*

\*MAKE & MODEL REQUIRED

**COLOR**

- POLAR WHITE
- CASHEW TAN
- MIST GRAY
- PRIMER
- OTHER \_\_\_\_\_



- STANDARD 1/4" GLASS SIZES:**
- 8 x 30 (6-1/2 x 28-1/2 VISIBLE)
  - 12 x 12 (10-1/2 x 10-1/2 VISIBLE)
  - 24 x 24 (22-1/2 x 22-1/2 VISIBLE)
  - 24 x 30 (22-1/2 x 28-1/2 VISIBLE)
- GLAZING TYPE AND THICKNESS:**
- 1/4" TEMPERED
  - 1/4" WIRE
  - 1/4" LEXAN
  - CUTOUT ONLY (NO KIT)
  - OTHER \_\_\_\_\_

**CUSTOM SIZES:**

VISIBLE WIDTH \_\_\_\_\_

VISIBLE HEIGHT \_\_\_\_\_

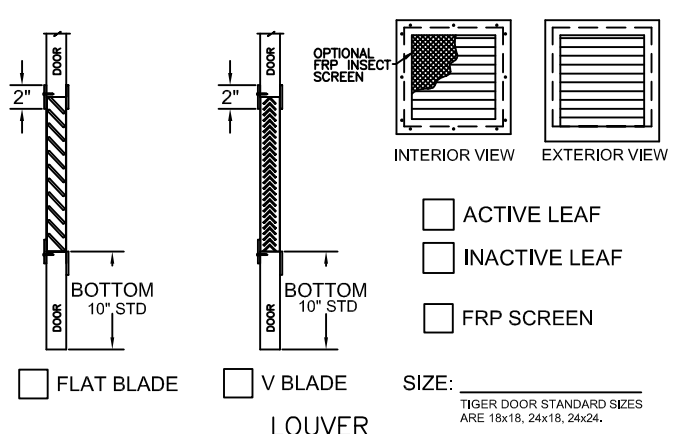
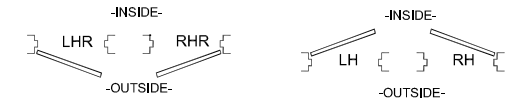
TOP TO VISIBLE \_\_\_\_\_

EDGE TO VISIBLE \_\_\_\_\_

CENTER HORIZONTALLY

- GLAZING:**
- BY TIGER DOOR
  - BY OTHERS
  - ACTIVE LEAF
  - INACTIVE LEAF

**VISION LIGHT**



SIZE: \_\_\_\_\_  
TIGER DOOR STANDARD SIZES  
ARE 18x18, 24x18, 24x24.



1181 Garden Street  
Greensburg, PA 15601  
PH. 888-891-4416  
PH. 724-834-7300  
FAX 724-830-2871

**CUSTOMER NOTES:** \_\_\_\_\_  
\_\_\_\_\_  
\_\_\_\_\_

www.tigerdoor.com

**DOUBLE DOOR AND TRNS FRAME**

**CUSTOMER:** \_\_\_\_\_

**PROJECT:** \_\_\_\_\_

**DOOR MARK:** \_\_\_\_\_